



MONTHLY MEMBERSHIP PROGRESS REPORT

District 25 C

Results as of: 09/30/2017

GMT: STEVE ANTON

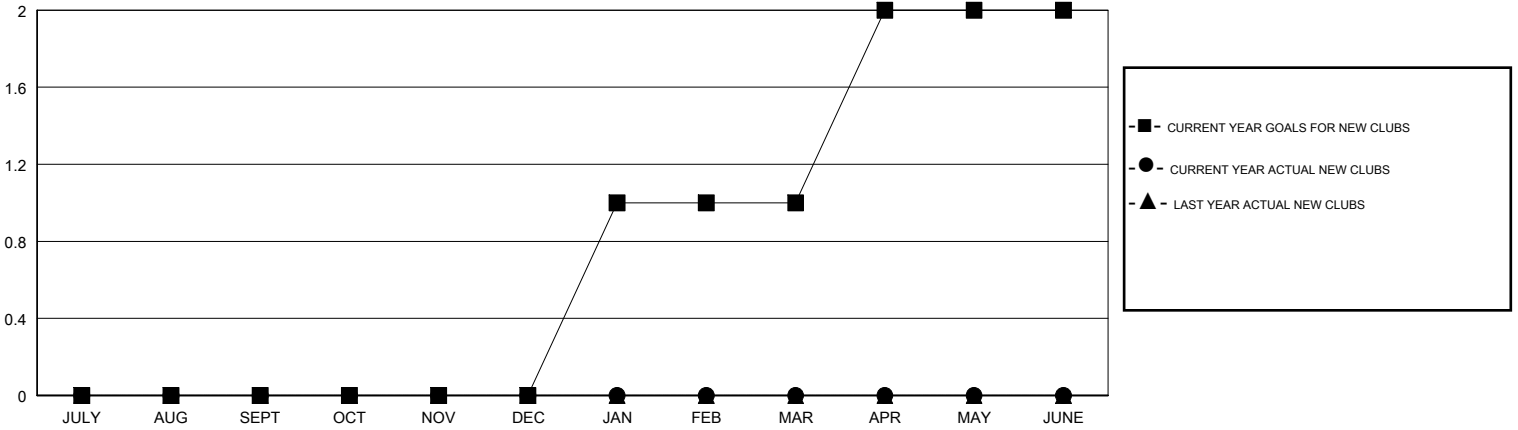
LOCATION INDIANA

GMT CA

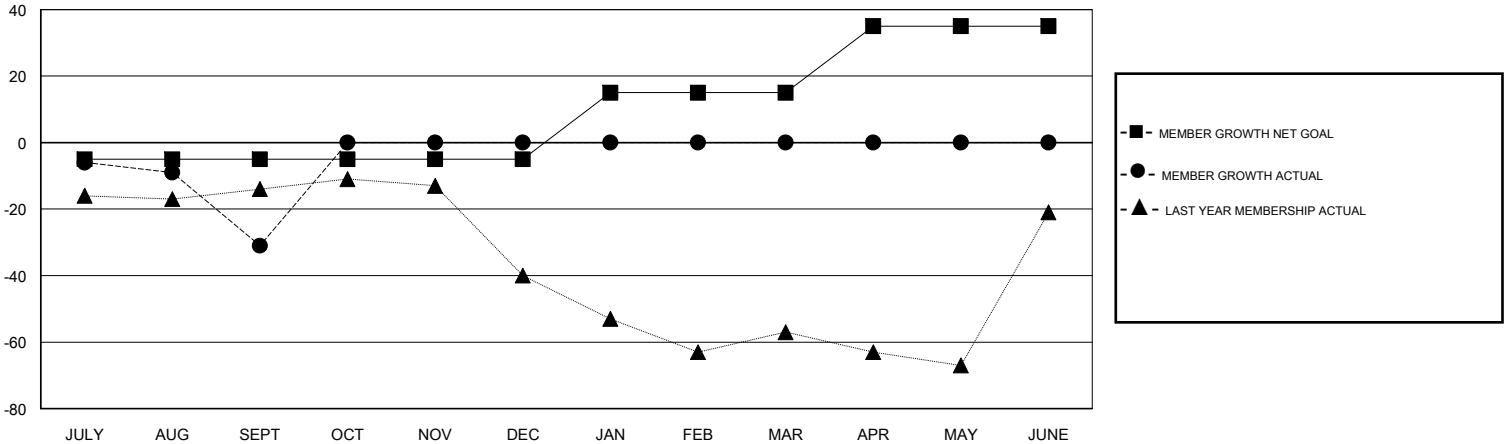
Clubs			
RESULTS FOR 2017-2018			
QUARTER	NEW CLUB GOAL	NEW CLUBS	DROPPED CLUBS
JULY/AUG/SEPT	0	0	0
OCT/NOV/DEC	0	0	0
JAN/FEB/MAR	1	0	0
APR/MAY/JUNE	1	0	0

Members			
RESULTS FOR 2017-2018			
QUARTER	MEMBER GROWTH NET GOAL	MEMBER GROWTH ACTUAL	DROPPED MEMBERS ACTUAL (including transfers)
JULY/AUG/SEPT	-5	16	47
OCT/NOV/DEC	0	0	0
JAN/FEB/MAR	20	0	0
APR/MAY/JUNE	20	0	0

GOALS AND ACTUAL NEW CLUBS CUMULATIVE



GOALS AND ACTUAL MEMBERS CUMULATIVE



DROPPED CLUBS: 0	9 CLUBS OF 57 ADDED 1 OR MORE NEW MEMBERS	<u>GENDER DISTRIBUTION</u> MALE 1,117 (71.88%) FEMALE 437 (28.12%) Women Percentage Fiscal Year Goal: 29%
<u>DROPPED MEMBERS</u> DECEASED 3 CLUB CANCELLED 0 OTHER 44 TOTAL 47	CLICK HERE FOR CUMULATIVE MEMBERSHIP DATA	TOTAL FAMILY UNIT MEMBERS 394 FAMILY MEMBERS PAYING HALF DUES 204